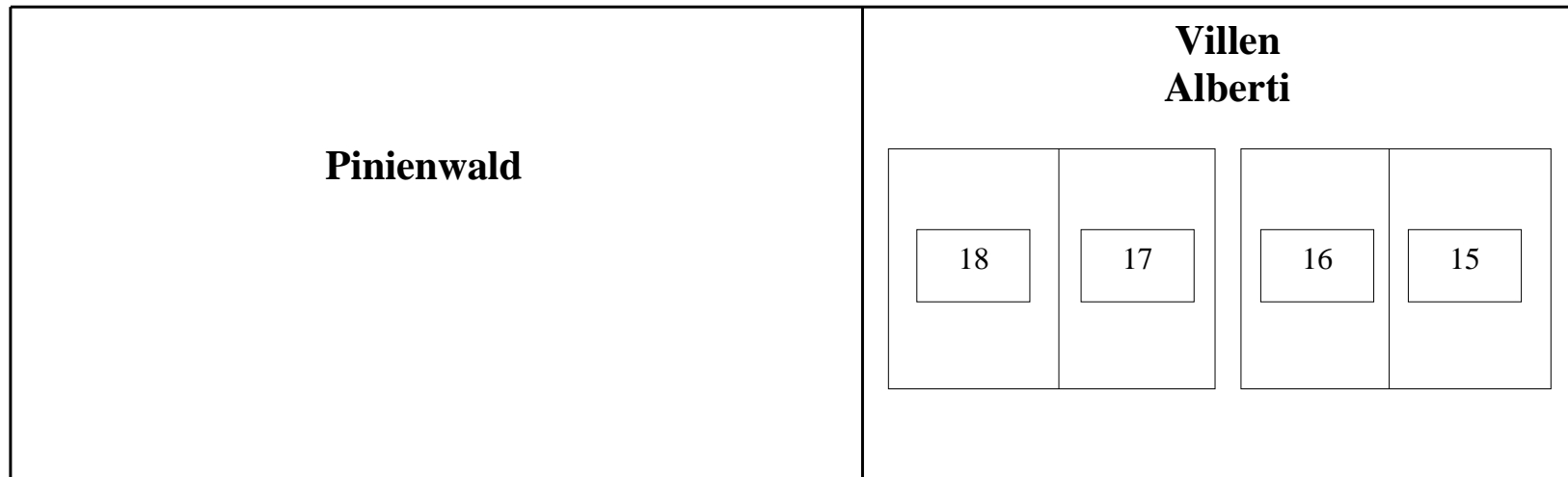
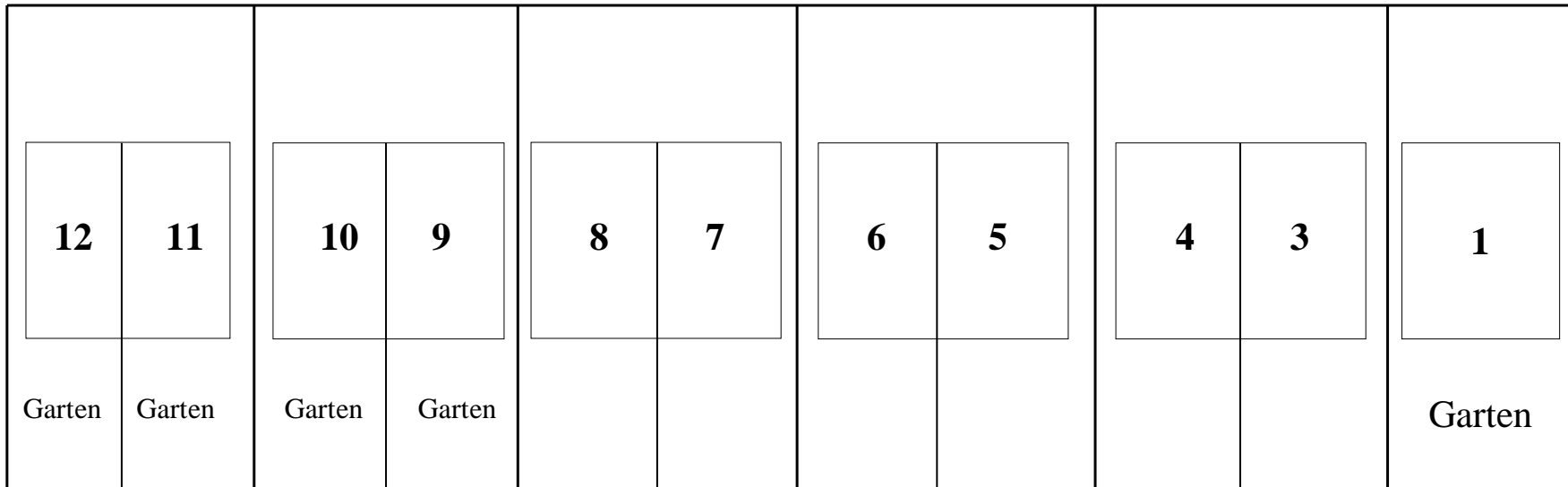


Villen El Pinar – Lageplan



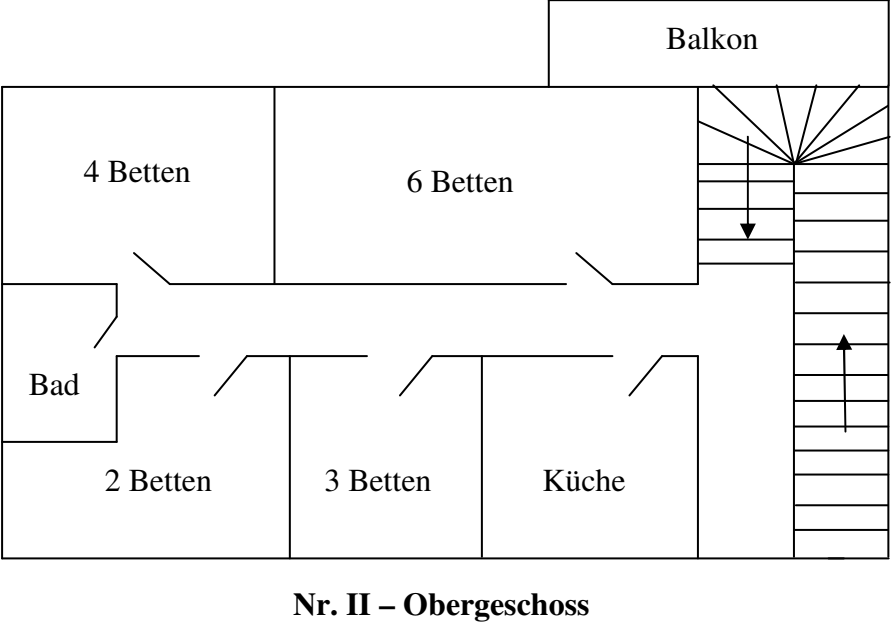
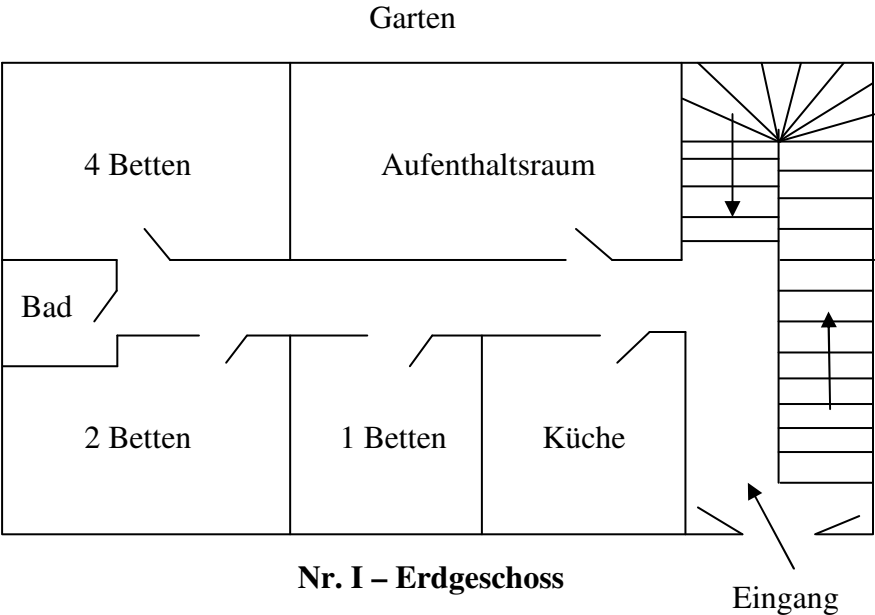
STRASSE

Villen El Pinar



Villen El Pinar Haus I – Bettenplan

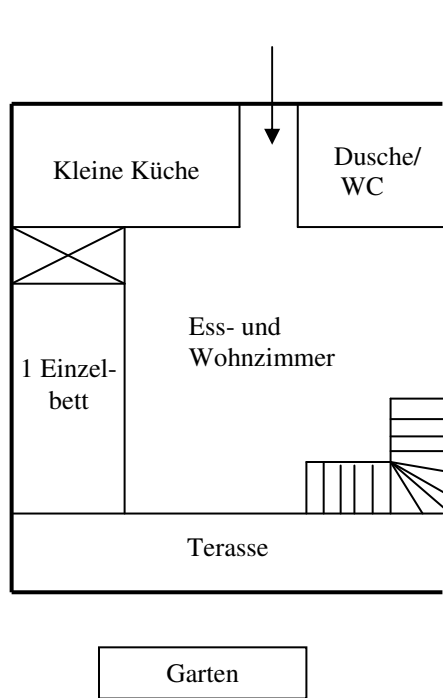
Insgesamt 22 Betten



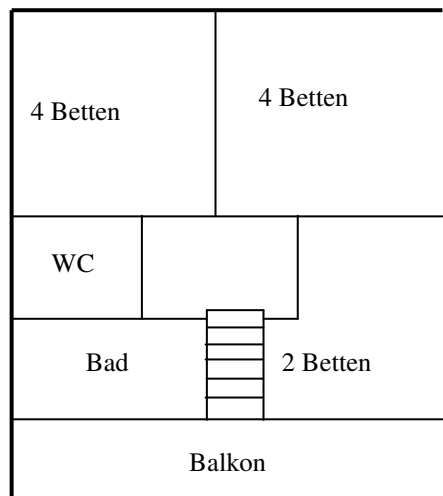
Villen El Pinar 11 – Bettenplan

Insgesamt 11 Betten (Etagen und Einzelbetten)

ERDGESCHOSS



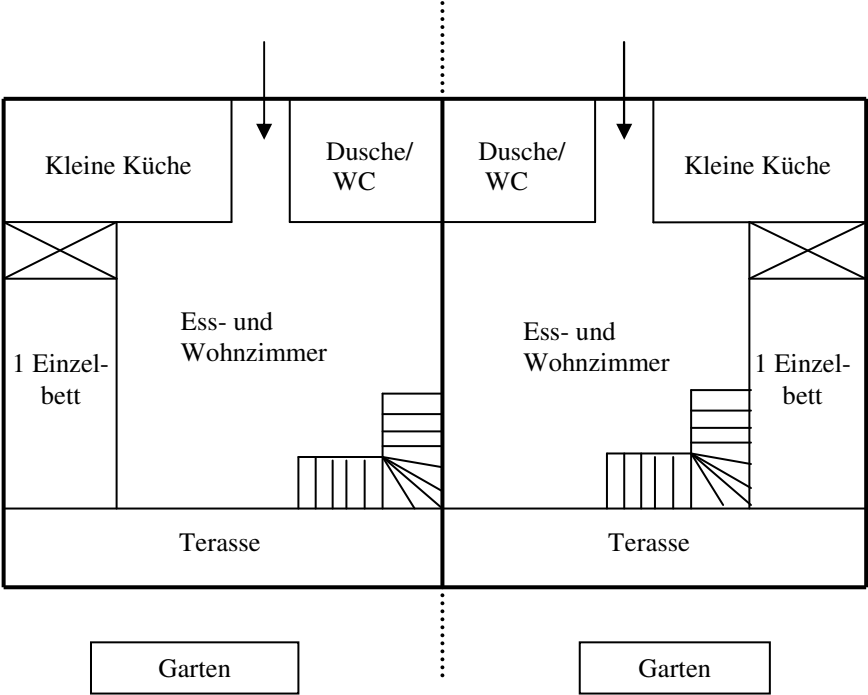
OBERGESCHOSS



Villen El Pinar 9, 10 und 12 – Bettenplan

Insgesamt 36 Betten (je Einheit 12)
(Etagen- und Einzelbetten)

ERDGESCHOSS



OBERGESCHOSS

